

ANNUAL REPORT

2024-25

THE YEAR 2024

As we reflect on another year of impact and innovation, we are filled with deep gratitude and renewed purpose. 2024 was a transformative year for GHE. A year where we not only expanded our reach but also deepened our commitment to building climate-resilient empowered communities across India's most remote frontiers.

From the high-altitude villages of Ladakh to the dense forests of the Northeast, our team, partners and community members came together to bring innovation solutions to those who have long remained at the edge of development. Our integrated model of sustainable rural development anchored in **clean energy, health, digital education, climate action and local entrepreneurship** continues to demonstrate that systemic change is possible even in the most challenging geographies.

In 2024, we reached a major milestone, positively impacting over 1 million lives. Our focus now shifts to creating meaningful employment opportunities for youth in remote regions, through rural experiential travel, skill-building programs and **scaling climate-aligned initiatives such as clean cookstove deployment and afforestation**.

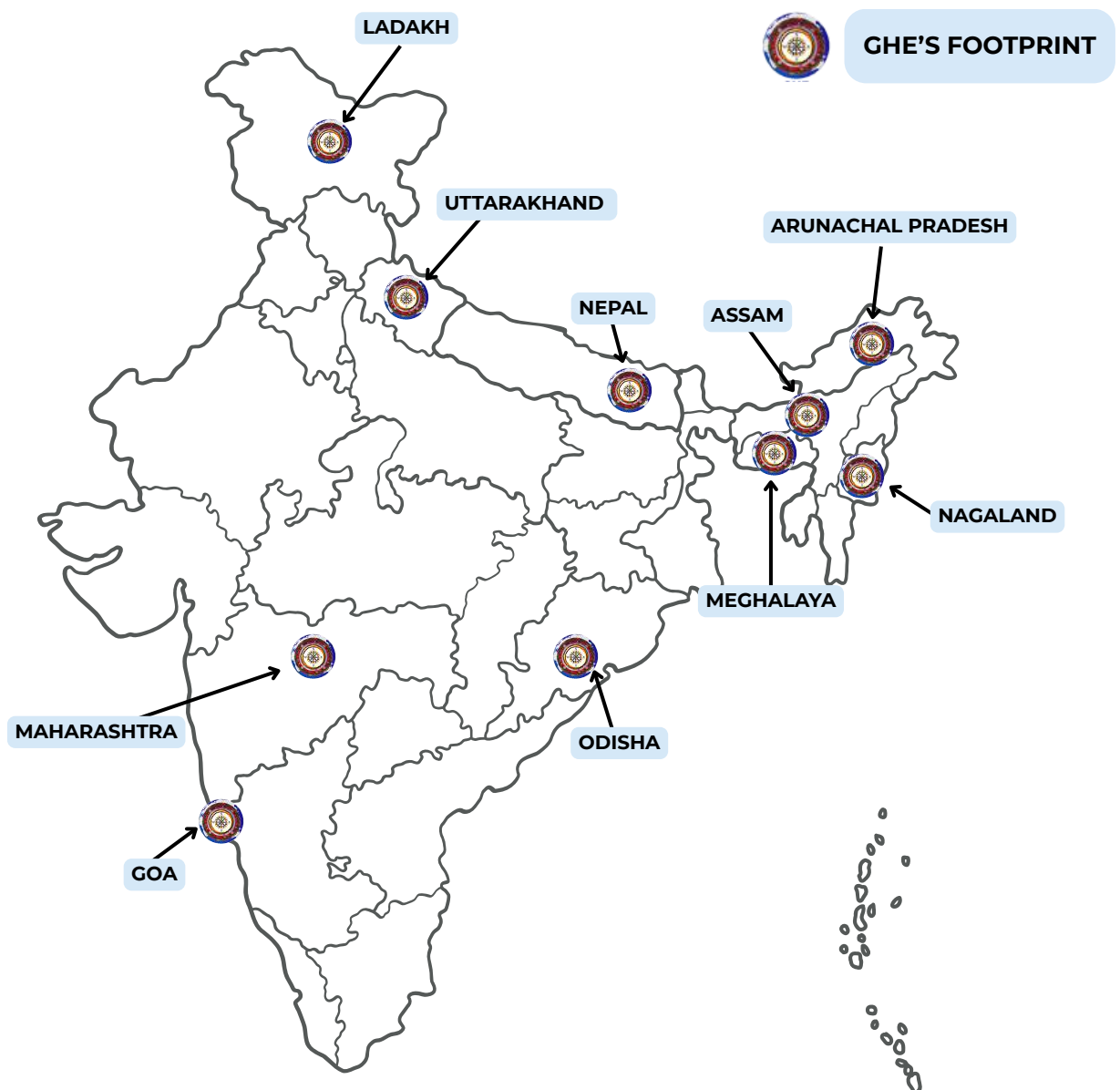
Our success is rooted in the strength of collaboration with communities, governments, partners and a passionate team that believes in the power of purpose-driven change. At a time when the world is grappling with climate uncertainty and inequality, we remain hopeful because we've seen firsthand what's possible when local wisdom meets global innovation.

We invite you to journey through the pages of this report, not just as a summary of milestones, but as a reflection of **what becomes possible when impact is purposeful and driven by the communities at the heart of it**.

Let's continue to climb together toward a brighter and more equitable future.

OUR FOOTPRINT

GHE has been working in multiple regions of India over the past 12 years. With a strong grassroots presence, GHE has empowered local communities to lead the shift toward clean and sustainable energy. Our programs have ranged from setting up solar microgrids to training initiatives that equip residents with the skills to manage and scale these systems independently. Through partnerships with local governments and organizations, we ensure the impact is both lasting and far-reaching. This collaborative approach not only addresses immediate energy needs but also contributes to economic development and environmental conservation, paving the way for a brighter, more sustainable future for these communities.



KEY AREAS OF IMPACT



ENERGY
ACCESS



IMPACT
EXPEDITIONS



EDUCATION
ACCESS



SKILL
DEVELOPMENT



HEALTHCARE
ACCESS



LIVELIHOOD
OPPORTUNITIES



DECARBONISATION

IMPACT AT A GLANCE

2013- 2024

Across remote corners of India, a quiet but powerful transformation took place. Solar energy lit up homes, schools and health centers, bringing new life to communities once left in the dark. Women artisans revived traditional crafts, while families welcomed travelers through vibrant rural homestays. In schools, solar-powered computer labs sparked curiosity and in health centers, cleaner energy enabled safer care for mothers and infants. Young people gained skills in hospitality and trades, finding reasons to stay and grow in their own villages. From the forests of Assam where trees were planted, to kitchens where clean cookstoves replaced harmful ones, this was a movement led by communities, rooted in sustainability and rich in impact.

207VILLAGES
ELECTRIFIED**26**HEALTH CENTERS
UPGRADED**1.18 Million**LIVES IMPACTED ACROSS REMOTE
REGIONS OF INDIA**78k**CLEAN COOKSTOVES
DEPLOYED**\$167k**ENTERPRISE EARNINGS FROM TOURISM
SETUP ACROSS REMOTE DESTINATIONS**1.1**MW OF SOLAR POWER
INSTALLED**128**DIGITAL EDUCATORS
TRAINED**320**SOLAR TECHNICIANS
TRAINED**276**HOMESTAY OWNERS
TRAINED**229**ENTREPRENEURS
TRAINED**338,000**TONS OF CO₂ EMISSIONS AVOIDED THROUGH
CLEAN ENERGY ANNUALLY**40**SMART CLASSROOMS
SETUP**7**MONASTERIES
ELECTRIFIED

JOURNEYS THAT SPARK CHANGE



PATHWAYS TO CHANGE

Every GHE expedition begins with a simple goal: **to reach the unreachable.**

Across rugged terrains, our teams travel with communities, carrying not just equipment, but hope. Expeditions are where **partnerships are born**, solutions are built and the first light shines in homes that have known generations of darkness.

Each journey is more than **delivering infrastructure**, it's about trust, connection and the shared dream of a **brighter future.**



**Student Leaders
Expedition 2024**

JOURNEYS OF LEARNING AND IMPACT

Student expeditions go beyond just travel—they serve as transformative experiences that bring both students and remote communities closer together. By engaging in projects that directly support local needs, such as improving education, enhancing healthcare or contributing to sustainable livelihoods, students gain a deeper understanding of the challenges faced by these communities. These hands-on experiences foster empathy, leadership and social responsibility, empowering students to become advocates for change.

The expeditions not only expose students to new perspectives, but they also create long-lasting impacts in the communities they visit. From setting up solar energy systems to supporting local agriculture or health initiatives, students actively contribute to the betterment of these communities. These efforts help boost local economies, strengthen social structures and promote sustainable development, creating a ripple effect that continues long after the expeditions conclude.

By integrating learning with service, these expeditions spark a cycle of positive change, equipping students with the skills and passion to drive social impact in the future, while uplifting the lives of those in remote areas.





BEYOND THE BOARDROOM

GHE partnered with a Tata Group Company to engage its leaders through a onground volunteering initiative in Meghalaya's Garo Hills. The team deployed clean energy solutions in remote villages, bringing clean and reliable electricity to off-grid households for the first time.

During the expedition, the leaders immersed themselves in the vibrant life of the villages, engaging with the local community while participating in the hands-on deployment of clean power systems. This impactful collaboration not only provided sustainable energy access to the remote villages but also fostered meaningful connections and a shared sense of purpose, showcasing the power of collective action in driving positive change.

IMPACT OF EXPEDITIONS



In Ladakh's remote high-altitude villages, winter brings months of biting cold and with it, a daily struggle to stay warm. Traditional wood stoves, though essential, consume large quantities of firewood and fill homes with dense, harmful smoke.

To address this, GHE deployed the Himalayan Rocket Stove, a high-efficiency solution that cuts firewood use by up to 60% and drastically reduces indoor air pollution, through its Impact expeditions. Delivered directly to hard-to-reach homes, these stoves offer families warmth without sacrificing their health or the environment.

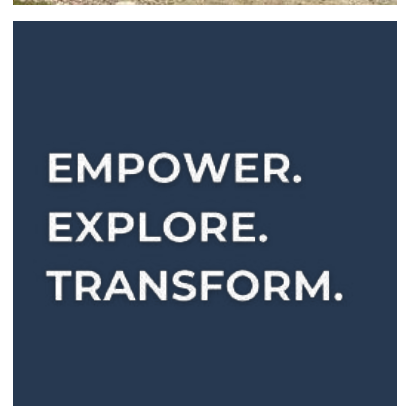
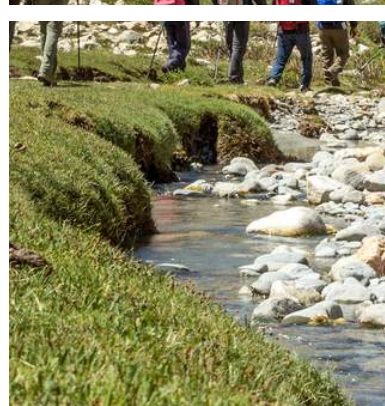
The benefits are immediate and far-reaching. Women and children breathe cleaner air, respiratory illnesses decline and time once spent collecting firewood is now available for learning or livelihood. These aren't just stoves, they're sparks of change, quietly transforming health, dignity and sustainability in every home they reach.

145

Households impacted in the
Himalayas



8 DECENT WORK AND
ECONOMIC GROWTH



\$56K

Income locally
generated through
Expeditions

**EMPOWER.
EXPLORE.
TRANSFORM.**

CHANGING LIVES

Tourism, when thoughtfully directed, can do more than fuel economies. It can restore dignity, revive traditions and reshape futures. In many of the remote regions where GHE works, the introduction of **community-run homestays** has done exactly that. By training families in hospitality and enabling them to open their homes to travelers, GHE is creating sustainable livelihoods right at the doorstep. These homestays offer more than accommodation, they are gateways into **local culture, cuisine and stories**. Guests leave with a deeper connection to the land and its people, while hosts gain steady income, new skills and a renewed sense of pride.

This model also **encourages tourism dispersal**, moving beyond crowded circuits to lesser-known, culturally rich villages ensuring that the benefits of tourism reach those who need them most. What emerges is not just economic upliftment, but a powerful exchange of culture, understanding and opportunity.

One homestay at a time, lives are changing — and so is the way we travel.





Sakti Host receiving
TOFT Award 2024

GHE-powered **Sakti Eco Homestay** won the **Wildlife Harmony Homestay** of the Year Award at the **7th TOFTigers Wildlife Tourism Awards**. Nestled at the Warila Pass foothills, this homestay, run by an Indian Army veteran, offers sustainable, eco-friendly hospitality with access to stunning **wildlife and Himalayan landscapes**. Guests can enjoy the rich biodiversity of the region, with guided treks and nature walks that provide opportunities to spot rare species in their natural habitat. The homestay itself is designed with sustainability in mind, using local materials and solar energy to **minimize its environmental impact** while providing modern comforts.

With every guest we welcome, we earn not just income, we earn confidence.

*-Thinles Giacho
Sakti Host*





ROOTED IN RESILIENCE

To preserve the natural beauty and cultural heritage of Maharashtra's Bhandardhara region in the Sahyadri mountains, GHE with support from its CSR partner built local tourism infrastructure and capacities for sustainable tourism.

The initiative empowered community members with skills to host visitors while safeguarding the fragile ecosystem. Homestays were established, hosts trained and local youth certified as adventure guides, creating livelihood opportunities while promoting tourism that respects and sustains Bhandardhara's unique landscape.

IMPACT OF HOMESTAYS



GHE's homestay initiative is turning remote homes into thriving centers of livelihood, cultural exchange, and responsible tourism. Families now **earn steady income** by hosting travelers, with women playing a central role in managing and running operations. This income boosts household stability, supports children's education, and fosters financial independence. By guiding tourists to lesser-known villages, the initiative promotes tourism dispersal — ensuring that more communities benefit, while easing pressure on overcrowded destinations. Guests experience authentic food, stories, and traditions, while hosts rediscover pride in their heritage. Along the way, communities grow stronger, connected by shared skills and purpose.

Homestays are not just rooms for rent, they are bridges of dignity, opportunity and culture.

\$8900

REVENUE EARNED
THROUGH TOURISM

18

HOMESTAYS SETUP
ACROSS LADAKH



8 DECENT WORK AND
ECONOMIC GROWTH



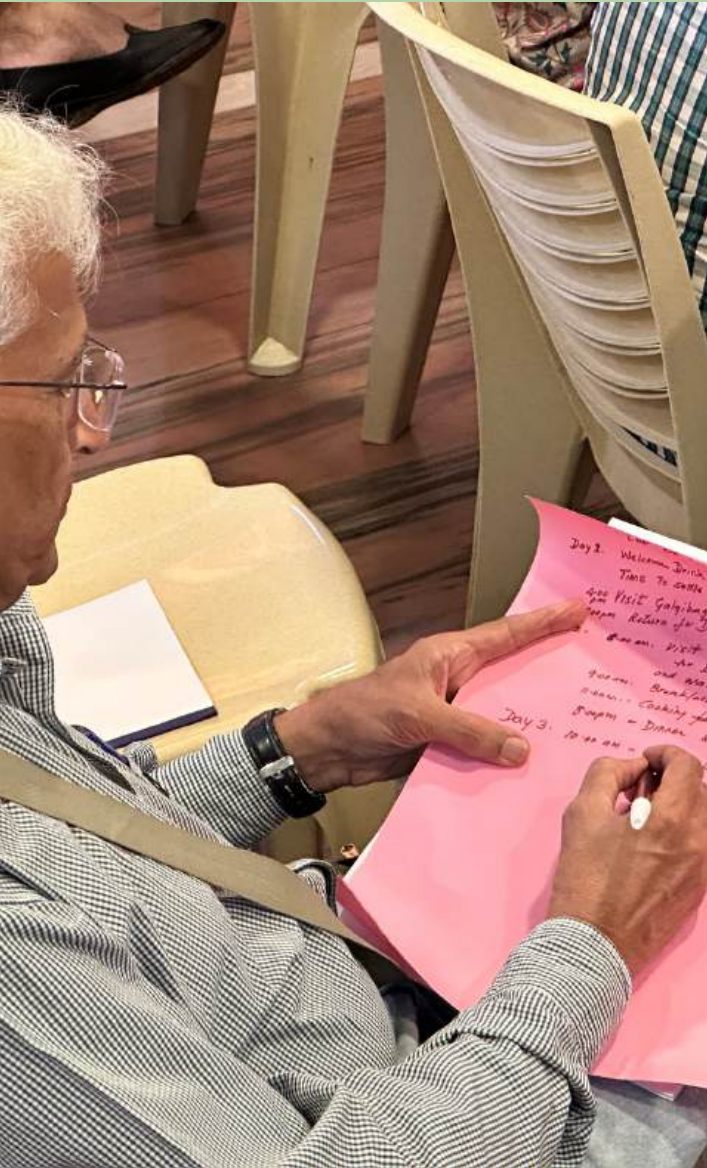
2600

GUESTS HOSTED



WHERE EVERY PATH LEADS TO A STORY,
AND EVERY HOME HOLDS A WORLD





FROM HOST TO ENTREPRENEUR

"I always had a room to offer. But now, I have a business to run."

With GHE's homestay training program, local hosts are transforming into confident micro-entrepreneurs. The initiative goes beyond preparing rooms. It builds skills in hospitality, hygiene, guest communication, digital tools and experience curation.

What once was an informal stay for visitors is now a sustainable livelihood, rooted in local culture and pride. Hosts learn to offer more than just a bed, they deliver authentic experiences, manage bookings and generate steady income, especially during tourist seasons.

The ripple effect is powerful: women gain independence, youth see a future in tourism and travelers discover the region through a genuine community lens.



Hospitality Training
in Progress



HOMESTAY TRAINING MODEL

GHE collaborated with Airbnb as its national training partner in India. Through this partnership, GHE has conducted multi-phase training sessions in Uttarakhand and helped launch the Airbnb Entrepreneurship Academy in Goa.

The four-day training equips rural hosts with essential skills in hospitality, guest experience, financial management and digital tools, enabling them to run professional homestays rooted in culture and sustainability. These efforts not only uplift local economies but also promote responsible tourism and entrepreneurship in remote communities.



- 01 Host with Purpose**
Build meaningful, eco-friendly homestays rooted in local culture and sustainable tourism principles.
- 02 Delight Every Guest**
Enhance guest experiences through personalized hospitality, local cuisine and safety-first practices.
- 03 Thrive Digitally & Locally**
Leverage digital tools and community networks to grow income and create long-term impact.



BACKPACKS AND BANDAGES

“Before, I carried bags. Now, I carry responsibility.”

I grew up watching trekkers pass through our village, always following, never leading. That changed when I joined the guide training program.

We didn't just learn how to navigate trails, we learned how to save lives. From treating altitude sickness to handling injuries deep in the forest, I now know what to do when things go wrong. I wear my first aid kit with as much pride as my backpack.

Today, tourists trust me. I don't just show them the way, I keep them safe. And back home, my family sees me differently too. I'm not just earning. I'm leading.

The forest is no longer just my backyard — it's my responsibility. And with every trek I lead, I'm helping put our village on the map, safely and sustainably.

Before this, I never imagined that the mountains could be a career. Now, I know they're also my classroom, my workplace and my purpose. This path I walk isn't just mine, it's one others can follow.

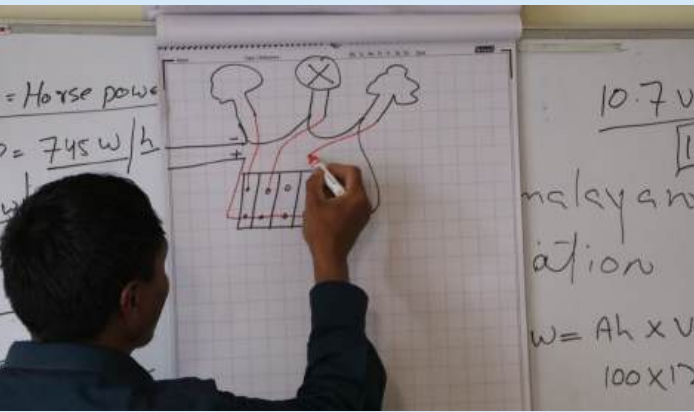
ADVENTURE WITH A PURPOSE



GHE with support from ASK Foundation conducted a comprehensive training program in Bari village, the base for Maharashtra's highest peak, Mt. Kalsubai. Recognising that local guides lacked formal training in adventure tourism and emergency response, the initiative aimed to enhance their skills and livelihoods. Over the course of the program, 27 guides received First Aid Training and 28 underwent Adventure Guiding Training.

The curriculum covered essential first aid techniques, CPR, management of common trekking injuries and emergency responses to various health issues encountered at high altitudes. By equipping local youth with these skills, the program not only improved tourist safety but also created sustainable employment opportunities, allowing the community to benefit more fully from the region's growing adventure tourism industry.





POWER IN THEIR HANDS

In remote Himalayan regions, where access to reliable electricity remains a challenge, empowering local communities with renewable energy skills is vital. Recognising this, GHE initiated a hands-on training program aimed at equipping youth with practical knowledge in solar energy technologies.

The program focused on teaching participants how to install and maintain solar microgrids, solar water heaters and streetlights, thereby fostering local expertise in sustainable energy solutions.

By transforming young individuals into solar entrepreneurs, the initiative not only addresses the region's energy needs but also creates new livelihood opportunities, contributing to the broader goal of sustainable development in high-altitude communities.



THE VILLAGE HAS A TECHNICIAN NOW

"People used to say that only men fix wires. But today, when a solar light stops working, they come to me."

Thanks to the training I received, I can now install and repair solar systems in my village. Before, we waited weeks for help. Now, the light comes back on the same day and I'm the one making it happen.

This skill hasn't just given me a livelihood; it's given me respect, confidence and a role in powering my community's future. Other girls now see what's possible and they're ready to learn too. For the first time, I'm not just helping my family, I'm lighting up the whole village. I no longer feel dependent or invisible. I earn, I lead and I solve problems. The solar toolkit isn't just equipment to me, it's a symbol of how far we've come.

When people look at me now, they don't just see a woman, they see an electrician, a problem-solver and a role model.





WHERE KNOWLEDGE MEETS PURPOSE.
ILLUMINATING JOURNEYS, BRAVING TERRAINS
AND RISING TO EVERY CALL.



CLEAN ENERGY ACCESS

From first switch to first step forward, powering resilience in the remotest corners of the world.



WHEN THE LIGHTS CAME ON



In the remote villages of Northeast India, where rugged terrain and dense forests have long delayed development, GHE's electrification initiatives are transforming lives. By bringing decentralized solar power to off-grid communities, these projects are providing reliable, clean energy for the first time, lighting homes, powering schools and enabling basic healthcare services. Beyond infrastructure, energy access is unlocking opportunities: children can study after dark, small businesses can operate longer and communities are experiencing a new sense of security and dignity. With each solar-powered village, the gap between isolation and inclusion narrows.

This transition from darkness to light is not just about technology, it's about empowerment. With local youth trained as solar technicians and communities taking ownership of their energy future, the electrification of Northeast India's remote villages is laying the foundation for sustainable, community-driven development.

A NEW KIND OF KITCHEN FIRE

In the remote Garo region of Meghalaya, cooking has traditionally meant long hours over firewood, with kitchens filled with smoke and forests steadily depleted. In a first-of-its-kind initiative, GHE has introduced solar-powered Electric Pressure Cookers (EPCs) to these communities, offering a clean, efficient and healthier alternative to traditional stoves.

This shift is transforming daily life: reducing indoor air pollution, easing the burden of fuel collection and saving time for women who've long borne the weight of this invisible labor. Through hands-on training, community engagement and accessible financing, GHE ensures that the solution is not just introduced, it's embraced and sustained. In these homes, the kitchen is no longer just a place of labor, it's becoming a space of empowerment.





HER KITCHEN HER POWER

In countless remote households, cooking has long meant hours of labor, heavy firewood loads, and smoke-filled kitchens. With the "Smoke to Solar" initiative, GHE is changing that narrative by introducing solar-powered Electric Pressure Cookers (EPCs) to rural women, replacing firewood with clean, efficient cooking. These cookers not only reduce indoor air pollution and drudgery but also bring time, dignity and control back into the hands of women.

Backed by community training, stakeholder engagement and accessible financing, this shift is more than a technological upgrade, it's a transformation in how energy, health and empowerment converge. In every household where solar replaces smoke, a woman gains more than a device, she gains power over her time, her health and her future.



**Reliable
Power Access**



**Community
Ownership**



**Clean &
Sustainable**

65

Solar Based EPCs setup in
Garo region of Meghalaya



IMPACT OF EPCs



The project has greatly improved the lives of women in Meghalaya's Garo region by replacing firewood-based cooking with **solar-powered Electric Pressure Cookers (EPCs)**. This clean energy solution has reduced indoor air pollution, lowered health risks, and eased the burden of firewood collection. As a result, women now save hours daily, which they can use for income-generating activities, education, or rest, leading to greater autonomy and well-being. The initiative also promotes forest conservation and climate action, contributing to sustainable rural development.

The introduction of Electric Pressure Cookers (EPCs) in the Garo region of Meghalaya has brought about transformative benefits for both households and the environment:

- **Significant Reduction in Firewood Use:** EPCs cut firewood consumption by up to 60%, reducing pressure on forests and lowering fuel costs.
- **Improved Health Outcomes:** By eliminating traditional stoves, EPCs reduce indoor air pollution, leading to fewer respiratory illnesses, especially among women and children.
- **Time Efficiency Gains:** EPCs save 2-3 hours per day by eliminating firewood collection and cooking time, freeing up time for economic activities and rest.



**BUILDING ENERGY ECOSYSTEMS WHERE
THE SUN FUELS SELF-RELIANCE.**





Pashmina Weaving
Center in Leh

WEAVING NEW BEGINNINGS

In Ladakh, GHE's Pashmina weaving workshop empowers women by training 20 locals in Pashmina production over 30 days. This initiative enhances their skills in spinning, weaving, dyeing and quality control, transforming them into artisans and entrepreneurs. The women now produce high-quality Pashmina products for international markets, integrating their crafts into sustainable tourism. The project not only fosters personal growth but also promotes gender equality, sustainable practices and cultural heritage, benefiting the artisans and the broader community through economic growth and resilience.

With newfound confidence and expertise, the artisans have become ambassadors of their rich cultural traditions, sharing stories of their craft with curious travelers. This unique blend of tradition and innovation captivates visitors, who are eager to learn about the meticulous process that transforms raw Pashmina fibers into luxurious shawls and scarves.



FROM SHEPHERDS TO STARGAZERS

Astrostays is a unique initiative that transforms the lives of shepherd communities in remote areas by introducing them to the world of astrotourism. By leveraging their traditional knowledge of the land and skies, shepherds are trained to host stargazing experiences for travelers. This initiative not only preserves the region's heritage but also provides new livelihood opportunities, enabling the local community to engage in sustainable tourism. It's a blend of cultural preservation and economic empowerment, offering travelers a chance to experience the wonders of the cosmos while supporting local communities.



Traveler looking
through the telescope





COSMOHUB

CONNECTING COMMUNITIES TO THE COSMOS

Cosmohub is a pioneering initiative by Astrostays that brings together the beauty of stargazing and sustainable tourism, empowering local communities in Ladakh. Through this program, shepherds and local hosts are trained to guide travelers through the wonders of the night sky, sharing not only astronomical insights but also the rich cultural heritage of the region. The program transforms these local experts into knowledgeable astrotourism guides, blending the timeless tradition of shepherding with modern scientific exploration.

Cosmohub offers a unique experience for travelers who can now engage with the cosmos while supporting the livelihoods of remote communities. It creates a new, sustainable income stream for local families, fostering both economic growth and cultural preservation. By integrating traditional knowledge with modern-day tourism, Cosmohub is bridging the gap between ancient wisdom and contemporary curiosity, promoting both environmental stewardship and community empowerment.



Astro Museum
in Cosmohub, Leh



**RAFTING SUSTAINABLE FUTURES
THROUGH HERITAGE CRAFTS AND
STARGAZING SKIES.**





CLEANER CHOICES
STRONGER COMMUNITIES

PLANTING SEEDS OF A GREENER FUTURE

This afforestation initiative focuses on revitalising ecologically and culturally significant forest areas in a remote valley of Northeast India. Rooted in traditional conservation practices, the effort blends environmental restoration with the preservation of indigenous spiritual beliefs and customs.

At the heart of the initiative is the community's deep reverence for their forests, which are seen as sacred spaces where harming nature is taboo. These areas serve not only as biodiversity hotspots but also as spiritual sanctuaries, reflecting a harmonious relationship between people and the environment.

By involving local youth in planting and awareness efforts, the program nurtures environmental ownership and intergenerational stewardship. This integrated approach strengthens both ecological resilience and cultural identity, ensuring that conservation is driven by the very communities it impacts.



30,000

Trees planted in the Sacred
Forests of Assam



Sapling Distribution
in Umswai



TOURISM THAT BEGINS WITH A SAPLING

In the serene Umswai Valley of Assam, the Tiwa community has long upheld a deep reverence for nature through their animistic beliefs, with sacred forests serving as spiritual sanctuaries. These forests, protected by the community's deities, are not only vital for biodiversity but also integral to their cultural identity. However, modern challenges like slash-and-burn agriculture and monocropping have threatened these ecosystems.

In response, GHE, in collaboration with Planeterra and G Adventures, launched the Umswai Valley Tree Plantation Initiative. This community-driven project focuses on reforesting degraded lands, promoting sustainable land management, and introducing multi-cropping systems to enhance soil fertility and water retention. Engaging local youth in nursery management and tree propagation, the initiative fosters environmental stewardship and provides sustainable livelihood opportunities. By blending ecological restoration with cultural preservation, the project aims to rejuvenate sacred forests, ensuring their protection for future generations.

LESS SMOKE MORE SMILES



GHE's clean cooking initiatives have scaled significantly through impactful partnerships with organisations like Myclimate, ClimatePartner, Infosys and Tata Communications. Together, these collaborations have enabled the deployment of over 78,000 improved cookstoves across remote regions of India. By combining on-ground implementation with carbon finance expertise and corporate support, the initiative addresses environmental and health challenges while empowering communities. These partnerships ensure high adoption rates, ongoing monitoring and reinvestment of carbon revenues into local development. The result is a model that not only reduces emissions and indoor air pollution, but also delivers tangible benefits for women, forests, and future generations.

As part of this broader effort, GHE's flagship cookstove project in Meghalaya's Garo region exemplifies deep community integration and long-term impact. Through localised training, household-level monitoring, and reinvestment of carbon revenues into livelihoods and eco-development, GHE ensures that clean cooking transitions are sustainable, inclusive and community-owned.



GHE's cookstove initiative has successfully reached some of the most remote and underserved villages in Meghalaya's Garo Hills, overcoming significant logistical challenges posed by the region's rugged terrain and limited infrastructure.

Through meticulous planning and community engagement, trained local technicians were dispatched to these isolated areas to install energy-efficient cookstoves directly in households.

**Cookstove
Distribution in
Progress**



By training local youth and women as cookstove technicians and community monitors, GHE has embedded ownership and accountability within the villages themselves.

This grassroots empowerment not only ensures the long-term sustainability of the project but also creates livelihood opportunities and builds community resilience.

**GHE Team of
Local Youth Members**



FROM ROOTS TO FLAME , CULTIVATING A SUSTAINABLE FUTURE WITH TREES AND SMOKELESS COOKSTOVES.



HEALTH WITHIN REACH

Strengthening Rural Healthcare



**STRONGER CENTRES
STRONGER COMMUNITIES**





LESS SMOKE MORE WARMTH

The introduction of Himalayan Rocket Stoves in Ladakhi homes has provided a sustainable solution to the region's extreme cold weather conditions. Traditional wood-burning stoves, commonly used for heating, have been replaced with these highly efficient stoves, which significantly reduce firewood consumption and indoor air pollution.

By using a more efficient combustion process, the stoves provide reliable warmth while reducing harmful smoke exposure, particularly benefiting women and children. This initiative not only improves health outcomes but also helps conserve the region's fragile forest resources, offering a long-term, environmentally friendly solution to heating in one of the world's harshest climates.



WARMER WINTERS HEALTHIER HOMES



In the remote highlands of Ladakh, where winters are harsh and traditional heating methods rely heavily on firewood and kerosene, GHE has introduced improved rocket stoves as an eco-friendly space heating solution. These stoves are designed to replace inefficient open fires, significantly reducing firewood consumption and indoor air pollution.

A family of five can consume up to 500 kg of firewood annually just for space heating and heating water, resulting in nearly 900 kg of CO₂ emissions. The rocket stoves incorporate advanced features such as an underfloor airflow system to preheat air, a vortex chamber for thorough gas mixing, and an exhaust valve to trap hot gases, maximising heat transmission and warmth.

Each rocket stove removes approximately 3 tons of carbon emissions annually. GHE's initiative not only provides warmth but also promotes sustainable energy practices, reduces environmental impact, and improves the quality of life for communities in these high-altitude regions.





**EMPOWERING COMMUNITIES WITH BETTER
HEALTHCARE AND CLEANER COOKING**





FROM BARE WALLS TO BRIGHT SCREENS

GHE's Digital Learning Lab initiative is transforming the landscape of education in remote and underserved regions like Ladakh, Meghalaya, and Arunachal Pradesh. By leveraging solar-powered smart classrooms, GHE ensures that students, even in the most isolated areas, have access to quality education despite unreliable electricity. This initiative goes beyond basic schooling by offering digital literacy programs that cater to local youth

The Computer Labs are provided with digital curriculum that is enabling the students with access to equip individuals with critical digital skills. Students can now practically engage in self-learning sessions. Additionally, the focus on teaching digital tools like MS Office helps local communities better navigate modern challenges, fostering self-reliance and boosting economic opportunities. Through this comprehensive approach, GHE is not just providing education, it is creating a sustainable foundation for future generations to thrive in an increasingly connected world.

8

Schools powered with Solar based Smart Classroom Setups



BEYOND BOOKS



GHE's Digital Learning Lab initiative has made significant strides in enhancing educational access in remote regions like Ladakh, Meghalaya and Arunachal Pradesh. By establishing solar-powered smart classrooms equipped with energy-efficient systems, GHE has ensured continuous learning opportunities for students in areas with unreliable electricity. The program has engaged over 5,000 students, providing them with curriculum-based education and essential digital skills.

Additionally, more than 200 educators have been trained, enhancing the quality of instruction in these underserved communities. The integration of solar power has not only facilitated uninterrupted learning but also promoted environmental sustainability. Through this initiative, GHE is bridging the educational divide, empowering individuals with the skills necessary to thrive in a technology-driven world.

REVITALIZING AANGANWADIS FOR A BRIGHTER FUTURE

In the underserved Garo Hills of Meghalaya Aanganwadi Centres faced severe challenges such as damaged infrastructure, no electricity and minimal learning resources. To address this, the experiential Aanganwadi model was introduced, focusing on creating child-friendly spaces through solar electrification, BALA-based educational murals, interactive learning kits and improved sanitation. In a short span of time, five Aanganwadi Centres were completely transformed into vibrant, functional early childhood development hubs, supported by local training and community involvement.



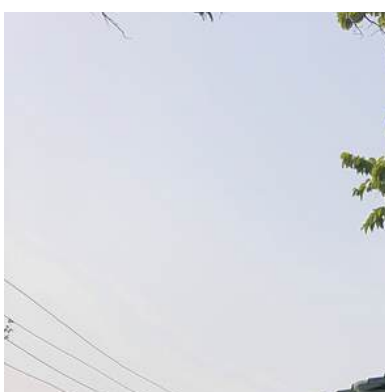
**Upgrade Aanganwadi in
Garo Hills, Meghalaya**

IMPACT OF AANGANWADIS

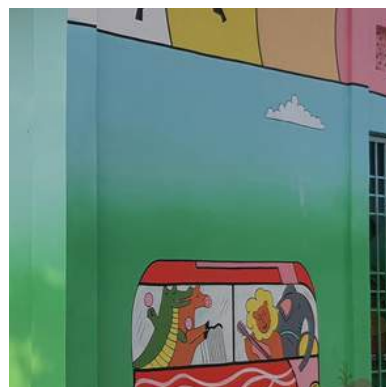
The revitalisation of the Aanganwadi Centres has ignited a powerful ripple effect in the early education landscape of Garo Hills. Classrooms that were once dim and uninspiring now radiate with color, light, and purpose—thanks to BALA-based artwork and solar-powered electrification.

These enhanced environments have not only fostered increased engagement among children but also empowered Aanganwadi workers to teach with improved tools and confidence. The integration of experiential learning kits and sanitation upgrades has significantly improved health, hygiene, and overall learning outcomes.

More than just infrastructure, the project has kindled a sense of community pride and ownership, laying a robust foundation for school readiness and holistic development. It now stands as a replicable model of transformation for rural education, demonstrating how thoughtful design and grassroots involvement can change the future—one child at a time.



**Digital
Transformation**



**Nurture
Innovation Culture**



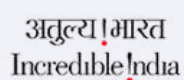
**Strengthening
Childcare**



EMPOWERING FUTURES THROUGH STRONGER AANGANWADIS AND SCHOOLS



PARTNERS IN IMPACT





GHE

www.ghe.co.in

info@ghe.co.in